

Scale Modes I

Identify the mode of each scale.



- a) Ionian
- b) Dorian
- c) Phrygian
- d) Lydian



- a) Ionian
- b) Dorian
- c) Phrygian
- d) Lydian



- a) Ionian
- b) Dorian
- c) Phrygian
- d) Lydian



- a) Lydian
- b) Mixolydian
- c) Aeolian
- d) Locrian

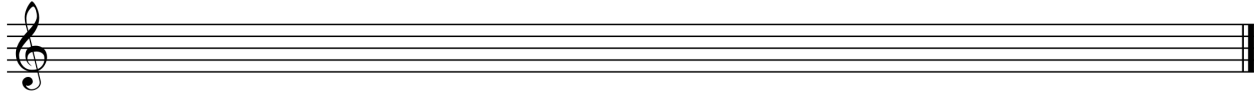


- a) Lydian
- b) Mixolydian
- c) Aeolian
- d) Locrian

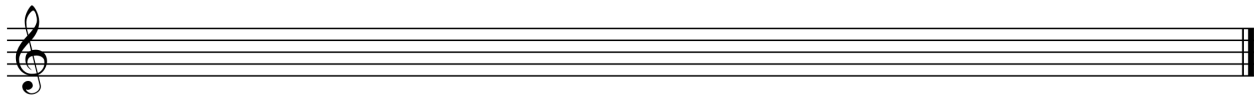
Scale Modes II

Write the indicated scale.

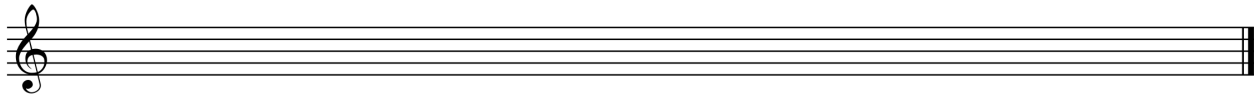
B \flat Dorian



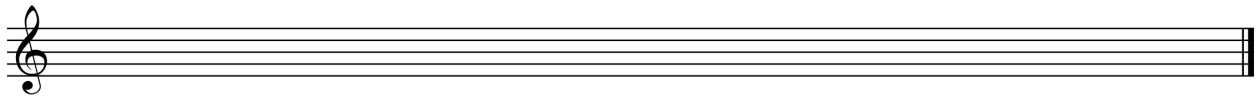
A Mixolydian



C \sharp Locrian



G Lydian



F Phrygian

